

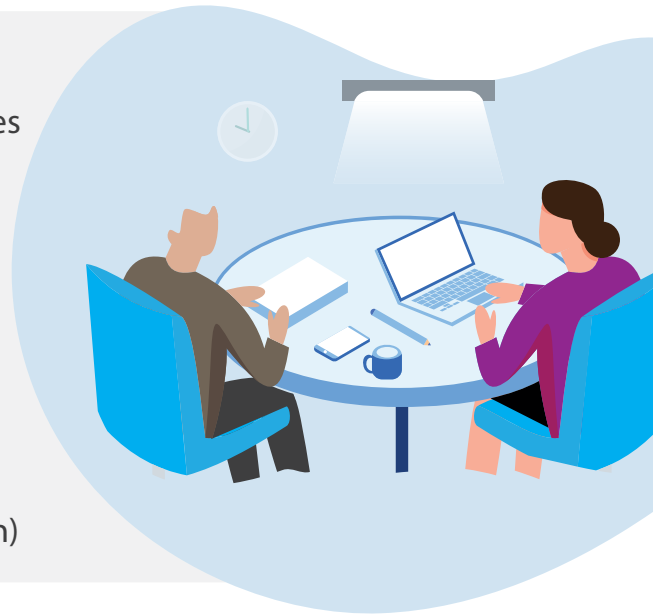
Educational Supervisor Programme

The Educational Supervisor Training Programme is open to all registered pharmacy professionals whether a pharmacist or pharmacy technician who are responsible for the overall supervision and management of a specified trainee's educational progress during a period of training placement, or a series of placements in any sector of pharmacy. This includes formal assessment and sign off.

Modules

The programme includes five modules. Four of the modules are delivered via flexible online learning whilst one of the modules will run as a live online event.

- ✓ Educational Supervision
- ✓ Educational Theories
- ✓ Giving Effective Feedback
- ✓ Assessment & Monitoring
- ✓ Trainees Requiring Additional Support (live session)



Key Features:

- ★ Flexible learning allowing you to complete within a 3-6 month period
- ★ The opportunity to join peer discussions enabling you to share best practice
- ★ Choose between video and audio learning to suit your learning style
- ★ Access to a wealth of resources and the opportunity to get certified

Requirements to complete the programme:

In order to successfully complete the programme and get certified you will be required to:

- ✓ Pass online assessments
- ✓ Complete an E-Portfolio

What is the cost?

The programmes are funded by Health Education England and are FREE to join for learners in London, Kent, Surrey, Sussex and the South West, Thames Valley & Wessex.

To find out more and sign up visit

[Propharmace.com/supervisors/](https://propharmace.com/supervisors/)